

# XL TIMING PULLEYS

0.200" Trapezoidal Pitch

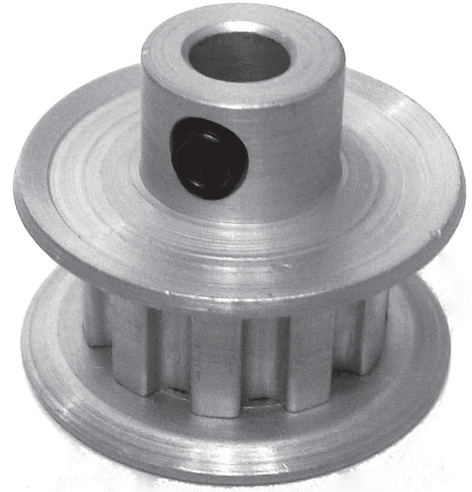
For 1/4" Wide Belts

Hub and Flanges

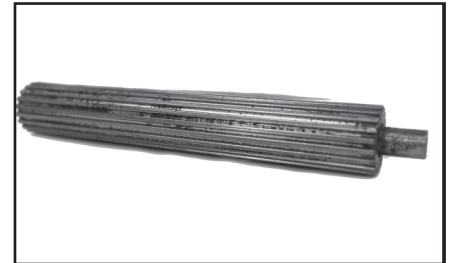
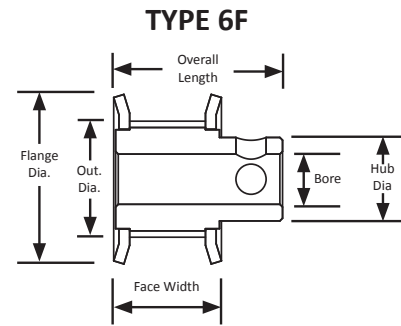
Aluminum

Clear Anodized

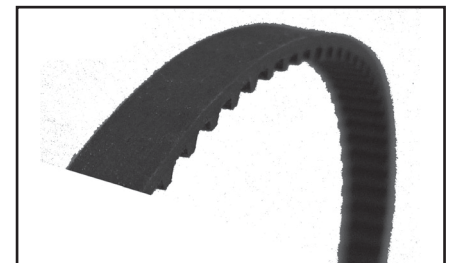
Finished Bore



Part Number	No. of Teeth	Type	Pitch Dia. (in)	Out. Dia. (in)	Flange Dia. (in)	Bore (in)	Face Width (in)	Overall Length (in)	Hub Dia. (in)	Set Screw
20XL025-6FA4	20	6F	1.273	1.253	1.500	0.313	0.438	0.750	0.938	2 x 8-32 @ 90°
20XL025-6FA5	20	6F	1.273	1.253	1.500	0.375	0.438	0.750	0.938	2 x 10-32 @ 90°
20XL025-6FA6	20	6F	1.273	1.253	1.500	0.500	0.438	0.750	0.938	2 x 10-32 @ 90°
21XL025-6FA3	21	6F	1.337	1.317	1.563	0.250	0.438	0.750	1.000	2 x 8-32 @ 90°
21XL025-6FA4	21	6F	1.337	1.317	1.563	0.313	0.438	0.750	1.000	2 x 8-32 @ 90°
21XL025-6FA5	21	6F	1.337	1.317	1.563	0.375	0.438	0.750	1.000	2 x 10-32 @ 90°
21XL025-6FA6	21	6F	1.337	1.317	1.563	0.500	0.438	0.750	1.000	2 x 10-32 @ 90°
22XL025-6FA3	22	6F	1.401	1.381	1.625	0.250	0.438	0.750	1.000	2 x 8-32 @ 90°
22XL025-6FA4	22	6F	1.401	1.381	1.625	0.313	0.438	0.750	1.000	2 x 8-32 @ 90°
22XL025-6FA5	22	6F	1.401	1.381	1.625	0.375	0.438	0.750	1.000	2 x 10-32 @ 90°
22XL025-6FA6	22	6F	1.401	1.381	1.625	0.500	0.438	0.750	1.000	2 x 10-32 @ 90°
24XL025-6FA3	24	6F	1.528	1.508	1.750	0.250	0.438	0.781	1.062	2 x 8-32 @ 90°
24XL025-6FA4	24	6F	1.528	1.508	1.750	0.313	0.438	0.781	1.062	2 x 8-32 @ 90°
24XL025-6FA5	24	6F	1.528	1.508	1.750	0.375	0.438	0.781	1.062	2 x 10-32 @ 90°
24XL025-6FA6	24	6F	1.528	1.508	1.750	0.500	0.438	0.781	1.062	2 x 10-32 @ 90°
26XL025-6FA3	26	6F	1.655	1.635	1.875	0.250	0.438	0.781	1.188	2 x 8-32 @ 90°
26XL025-6FA4	26	6F	1.665	1.635	1.875	0.313	0.438	0.781	1.188	2 x 8-32 @ 90°
26XL025-6FA5	26	6F	1.665	1.635	1.875	0.375	0.438	0.781	1.188	2 x 10-32 @ 90°
26XL025-6FA6	26	6F	1.665	1.635	1.875	0.500	0.438	0.781	1.188	2 x 10-32 @ 90°
28XL025-6FA3	28	6F	1.783	1.763	2.000	0.250	0.438	0.781	1.188	2 x 8-32 @ 90°
28XL025-6FA4	28	6F	1.783	1.763	2.000	0.313	0.438	0.781	1.188	2 x 8-32 @ 90°
28XL025-6FA5	28	6F	1.783	1.763	2.000	0.375	0.438	0.781	1.188	2 x 10-32 @ 90°
28XL025-6FA6	28	6F	1.783	1.763	2.000	0.500	0.438	0.781	1.188	2 x 10-32 @ 90°
28XL025-6FA7	28	6F	1.783	1.763	2.000	0.625	0.438	0.781	1.188	2 x 10-32 @ 90°
30XL025-6FA3	30	6F	1.910	1.890	2.125	0.250	0.438	0.781	1.313	2 x 8-32 @ 90°
30XL025-6FA4	30	6F	1.910	1.890	2.125	0.313	0.438	0.781	1.313	2 x 8-32 @ 90°
30XL025-6FA5	30	6F	1.910	1.890	2.125	0.375	0.438	0.781	1.313	2 x 10-32 @ 90°
30XL025-6FA6	30	6F	1.910	1.890	2.125	0.500	0.438	0.781	1.313	2 x 10-32 @ 90°
30XL025-6FA7	30	6F	1.910	1.890	2.125	0.625	0.438	0.781	1.313	2 x 10-32 @ 90°



For XL pitch pulley stock and flanges, see page 258.



For matching XL pitch belts, see page 187.